



Foundation and Overview of the BEANS Laboratory

The Bio Electro-mechanical Autonomous Nano Systems (BEANS) Project, which has been implemented under the Micromachine Center (MMC) since July 2008, has been transferred to the control of the BEANS Laboratory, a technology research association, in April 2009. After much effort—though only a three-month period of preparation—the technology research association was officially established on March 24 of this year. We are immensely grateful to all association members and concerned parties for their support and cooperation during this period.

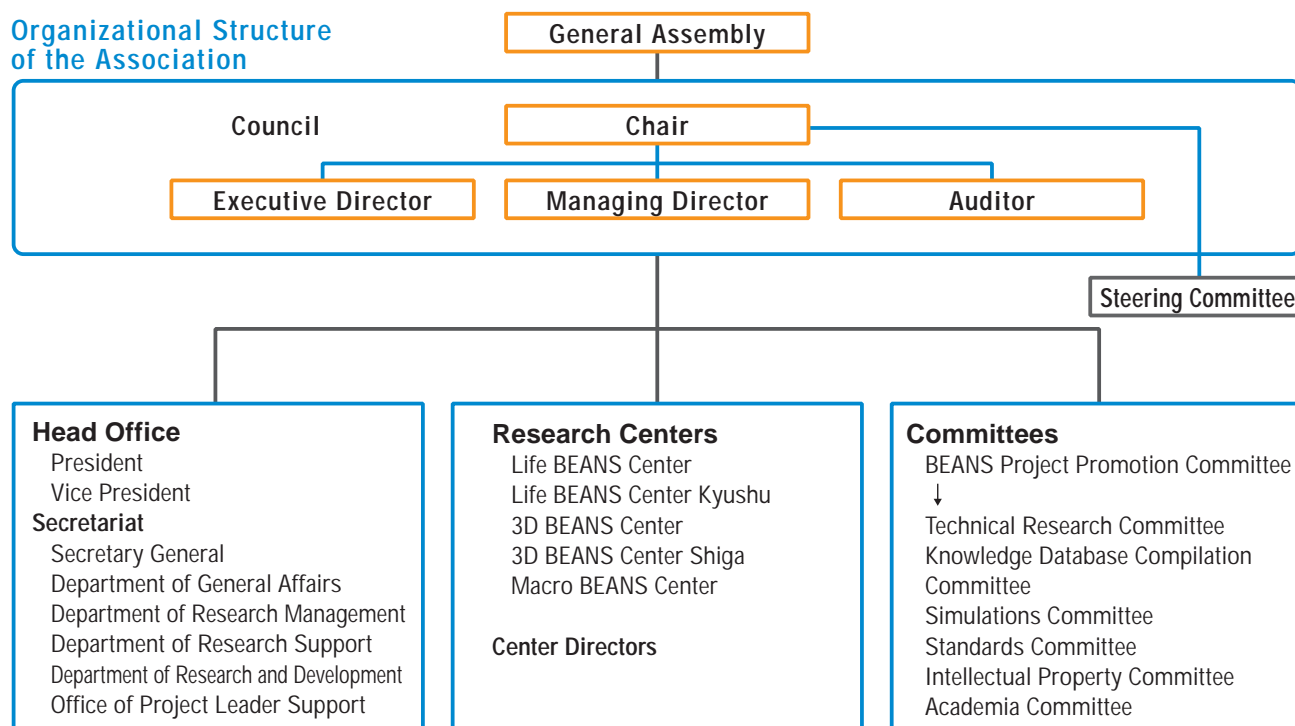
Owing to the cooperation of the member companies, an application for approval of the technology research association was prepared through a process that included a briefing session with interested parties (preparatory meeting for establishment

of the association) on January 16, a meeting of promoters on February 3, and an inaugural general meeting and council meeting on February 20. The application submitted to the Minister of Economy, Trade, and Industry on March 6 was approved on March 19, and the association was officially registered on March 24. An extraordinary general meeting was held on that very day to approve the project plans and budget for fiscal year 2009, and operations of the association were off to a smooth beginning on April 1.

Since the launch of operations, the association has joined forces with the MMC under the direction of Director Nomakuchi, with the goal of further expanding activities aimed at encouraging growth in Japan's MEMS industry.

| | | |
|--------------------------------------|---|--|
| Name | BEANS Technical Research Association (BEANS TRA), commonly referred to as the BEANS Laboratory | |
| Address | MBR Building, 6 th Floor, 67 Kanda-Sakumagashi, Chiyoda-ku, Tokyo 101-0026 | |
| Establishment dates | February 20, 2009 (inaugural general meeting) March 19, 2009 (approval of establishment) March 24, 2009 (official registration) | |
| Chair | Tamotsu Nomakuchi | |
| Members (18 organizations) | <div style="display: flex; justify-content: space-between;"> <div> Olympus Corporation Seiko Instruments Inc. Terumo Corporation Toshiba Corporation Fuji Electric Systems Co., Ltd. Panasonic Electric Works Co., Ltd. Mitsubishi Electric Corporation Lintec Corporation Institute for Unmanned Space Experiment Free Flyer Foundation (USEF) Japan Resources Observation System and Space Utilization Organization (JAROS) </div> <div> Omron Corporation Mathematical Systems Inc. Denso Corporation Fujikura Ltd. Furukawa Electric Co., Ltd. Mizuho Information & Research Institute, Inc. Mitsubishi Chemical Medience Corporation Micromachine Center (MMC) </div> </div> | |

Organizational Structure of the Association



Visit the following Web site for more information: <http://www.beanspj.org/lab/index.html>